



Community Pollinator Gardens

Deborah Chute Petit

Butterflyway Ranger, David Suzuki Foundation
Farmer, Laurenwood Farm

Briefly...

- Importance of pollinators
 - Little guys keep us alive
- Involving the community
 - Design, upkeep, education, enjoyment, food security
- A layered approach
 - Holistic approach
- Implementation strategies
 - How to start and how to keep it going
- Resources
 - Native plant guides, articles, signage, grants



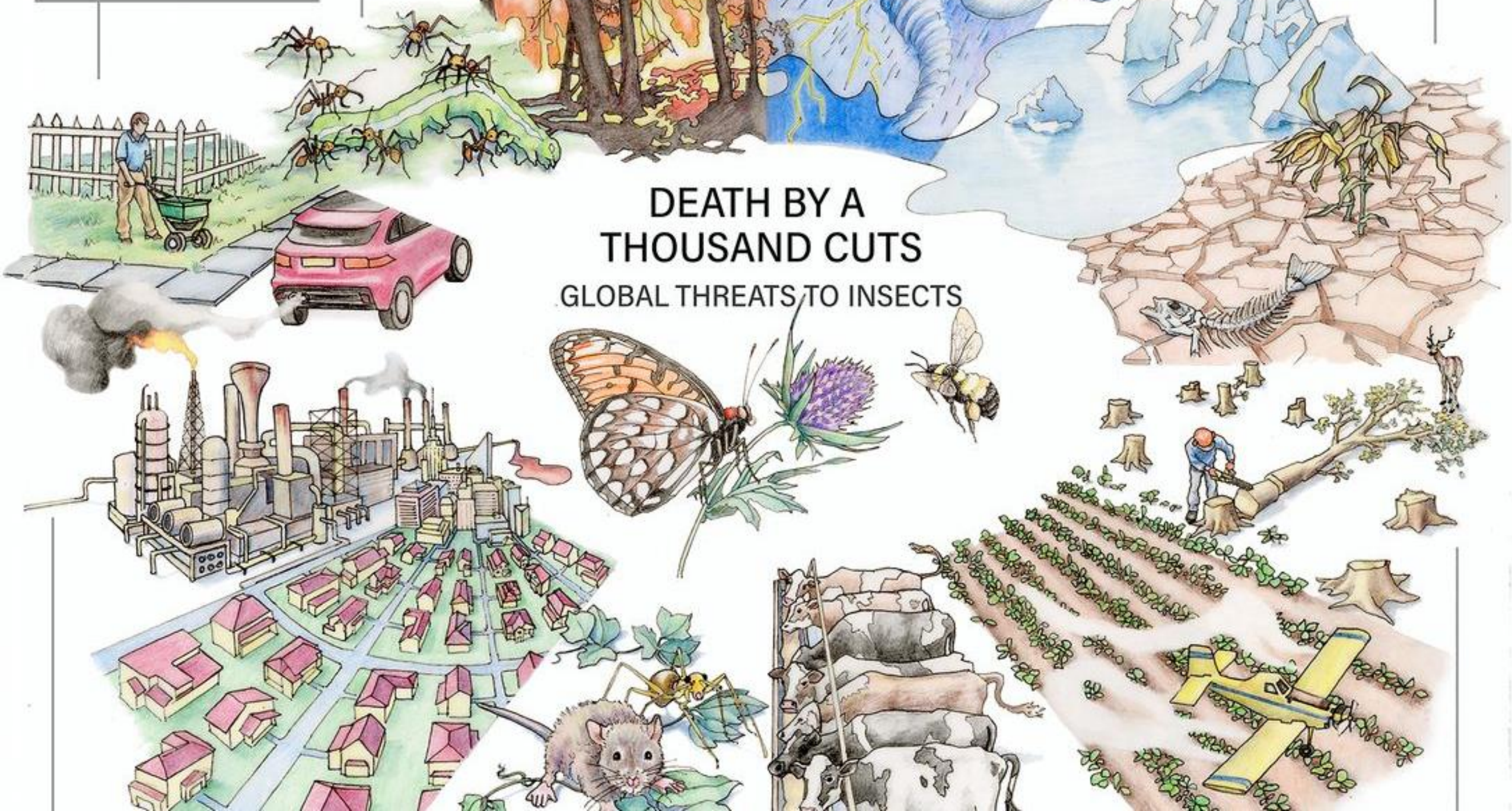


Remember this?



DEATH BY A THOUSAND CUTS

GLOBAL THREATS TO INSECTS



A citizen-led approach

- Butterflyway Project began in 2018 as a response to an ecological crisis
- Insect populations worldwide have declined by 45% in the past 40 years
- Butterflyways are pockets of land that provide food, shelter, and water to beneficial insects and other native species
- DSF has inspired volunteers across Canada to create butterflyways in their communities
- The first year, there were 12 Rangers. This year, there are over 1000 across Canada.



Community-building

- Residents leading planting projects are connected to local businesses, groups, and neighbours.
- Jode Roberts: “This cross-pollination within a community is really important, and I’ve often found it results in fun, unexpected things...”
- Canoe project
- Pollinator Paradise Hamilton
- Pollinate Collingwood
- Bee City





Canoes- dozens in Toronto, Markham



Pollinate Collingwood

- Jenn Jackson through Butterflyway and now Bee City
- Collingwood had declared a climate emergency the previous year
- Naturalized some sections of parks
- Learning garden attached to the library
- Businesses
- 15 gardens throughout Collingwood with more on the way





Collingwood, Ontario



pollinatecollingwood Last minute gift idea? Pollinate Collingwood is excited to collaborate with CCI and eARTh Revival in creating a beautiful wood garden sign to sit alongside your homegrown pollinator flowers! 🌻🐝

\$20 for the wooden sign* + 1 packs of native flower seeds!

*Sign approximately 30cm x 15cm

(\$10 will go towards the CCI construction technology class at CCI and \$10 will go towards Pollinate Collingwood to plant more native plants)

The sign will be ready in the spring but we are taking pre orders now. Msg us if you are interested at

Pollinate Collingwood



How to establish a butterflyway

- Plant native wildflowers
- Grow a native shrub or tree
- Collect a pile of fallen branches, stems, and rotting wood as a “woodpile bug hotel”
- Leave some patches of dirt alone as habitat for burrowing bees
- Add a shallow water source for pollinators to drink, e.g. bird bath
- Ideally, 50% of plant species would be native plants
- What else?



Perennial polyculture: a layered approach



Butterflyway
Project



Riley Park, Vancouver





WOODLAND BORDER

Rewilder Garden

Edible Food Forest

Gathering Place

Herb Gardens

ESPALIERED ORCHARD & MEADOW

Accessible Beds

Shared Garden Beds

RILEY PARK COMMUNITY GARDEN

A community space tackling food insecurity while enhancing community engagement.

COME GROW WITH US!

A MAP of

Entrance

WHEEL CHAIR PATH

Entrance

butterfly bush

SOUTH POLLINATOR BORDER

potatoes

lavender

aster

swiss chard

tomatoes

artichoke

lemon mint

chives

Garden Shed

bunchberry

snowberry

nodding onion

Produce Library

Compost Bins

blueberry

cranberry

salal

huckleberry

viola

bleeding heart

heather

apple

fig

WINTER POLLINATOR CORNER





Implementation strategy

- Designate areas to be improved
- Identify existing community engagement with each space, ie schools, local business
- Crowd-source garden design via social media blitz, contest, winning designs TBD by Township
- Garden Captain for each garden space, 2-3 per garden per annum if possible
- Mark layout and signage for each space
- Focus on creating the bones of each project, allow growth to become self-sustaining
- Document change over time



Garden Captain roles

- Role of Pollinator Captains
- Monitor gardens throughout the summer which includes watering, weeding & planting new plants (if necessary)
- Send biweekly status updates to committee on the health of the garden
- Images of the garden for archives and social media
- Recommendations



Township support

- Soil
- Mulch
- Compost
- Digital marketing/media
- Some staff hours to labour
- GIS technician
- Watering at the beginning
- Grants and other funding *please see resource list from email*



Support activities

- School Storybook Walk
- GIS map of pollinator garden locations
- Biking for Butterflies: community bike ride to visit some pollinator garden sites
- Yoga in the park
- Classes led by local farms or businesses
- Educational signage
- Environmental network
- Film and photo friendly displays
- Booth at Adj-Tos Farmer's Market



Butterflyway Support

- Name recognition and exposure (happy 85th birthday, David Suzuki!)
- Signs, letterheads, postcards, logos
- Native plant lists
- Gardening resources
- Educator resources
- Community science
- Studies
- Webinars
- Community grant and funding info





THANKS!

Deborah Chute Petit
deborah@laurenwoodfarm.ca