



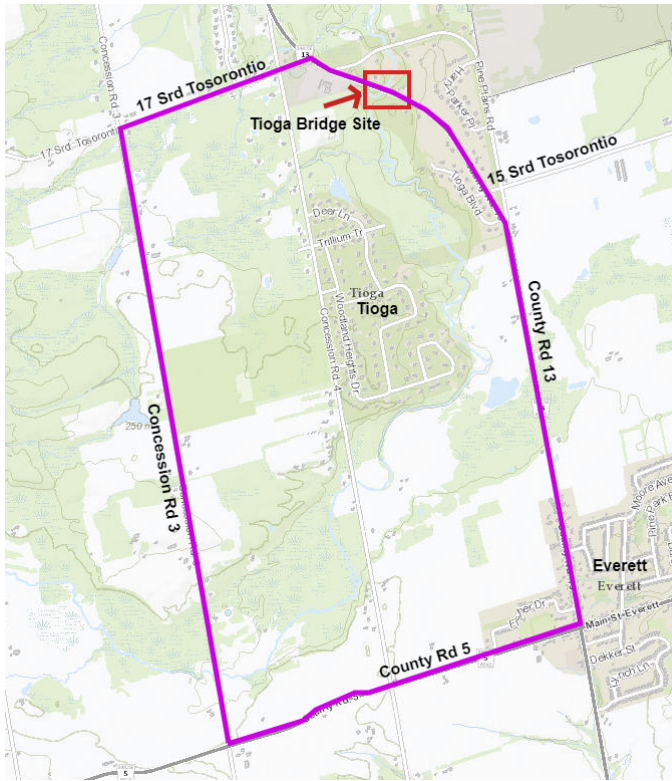
**County of Simcoe
Transportation and
Engineering**
1110 Highway 26,
Midhurst, Ontario L0L 1X0

Main Line (705) 726-9300
Toll Free 1-866-893-9300
Fax (705) 727-7984
simcoe.ca



**NOTICE OF FULL CLOSURE OF COUNTY ROAD 13
REHABILITATION OF TIOGA BRIDGE**

The County of Simcoe hereby advises and notifies all affected parties of the temporary (several days) full closure of County Road 13 as part of the Rehabilitation of the Tioga Bridge over the Pine River. A detour route will be implemented complete with full signage. Emergency Services have been notified and Public Advisory signs will also be erected at both roadway approaches to the Tioga Bridge one (1) week prior to the full closure.



Detour Key Map

The full closure will allow for the delivery, erection and installation of the structural steel girders in all three spans. The lifting of the girders will require large cranes to be set up at each end of the bridge with transport trucks delivering the steel girders to the site for lifting into place and for the final connections to be made.

County Road 13 will be fully closed at the Tioga Bridge site with no traffic able to pass. County Road 13 will be closed to all through traffic from between Tosorontio Sideroad 15 and Tosorontio Sideroad 17. However, local access to all residential properties within this stretch of County Road 13 will be maintained at all times from either the south or north ends (no access over the Pine River).

At the conclusion of the full closure County Road 13 will be returned to the single bi-directional lane on the bridge controlled by the portable temporary traffic signals.

The full closure of County Road 13 will take place over five (5) days between Monday, February 22 and Friday, February 26. The full closure is anticipated to start at 9:30 am on Monday, February 22 with County Road 13 to reopen by 5:00 pm on Friday, February 26, 2021.

The detour route will utilize County Road 13, County Road 5, Concession Road 3 and Tosorontio Sideroad 17 (see Key Map Above).

Comments or concerns should be directed to the appropriate contact as noted below:

<p>County of Simcoe 1110 Highway 26 Midhurst, ON L9X 1N6 Jae Park, P. Eng. Project Engineer e. jae.park@simcoe.ca t. 705-726-9300 x1166</p>	<p>Doug Dixon & Associates Inc. 2 County Court Boulevard, Suite 345 Brampton, ON L6W 3W8 Chris Middleton, P. Eng. Project Manager e. cmiddleton@dougdxonassociates.com t. 647-405-0523</p>	<p>Alexman Contracting Inc. 270 Barrie Street Thornton, ON L0L 2N0 Myles Ransom Project Manager e. mransom@alexmaninc.com t. 705-794-4520</p>
---	--	---