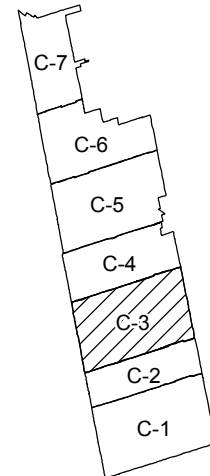


TOWNSHIP OF
ADJALA - TOSORONTIO

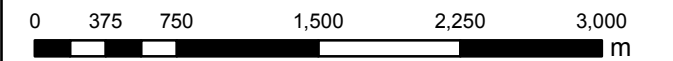
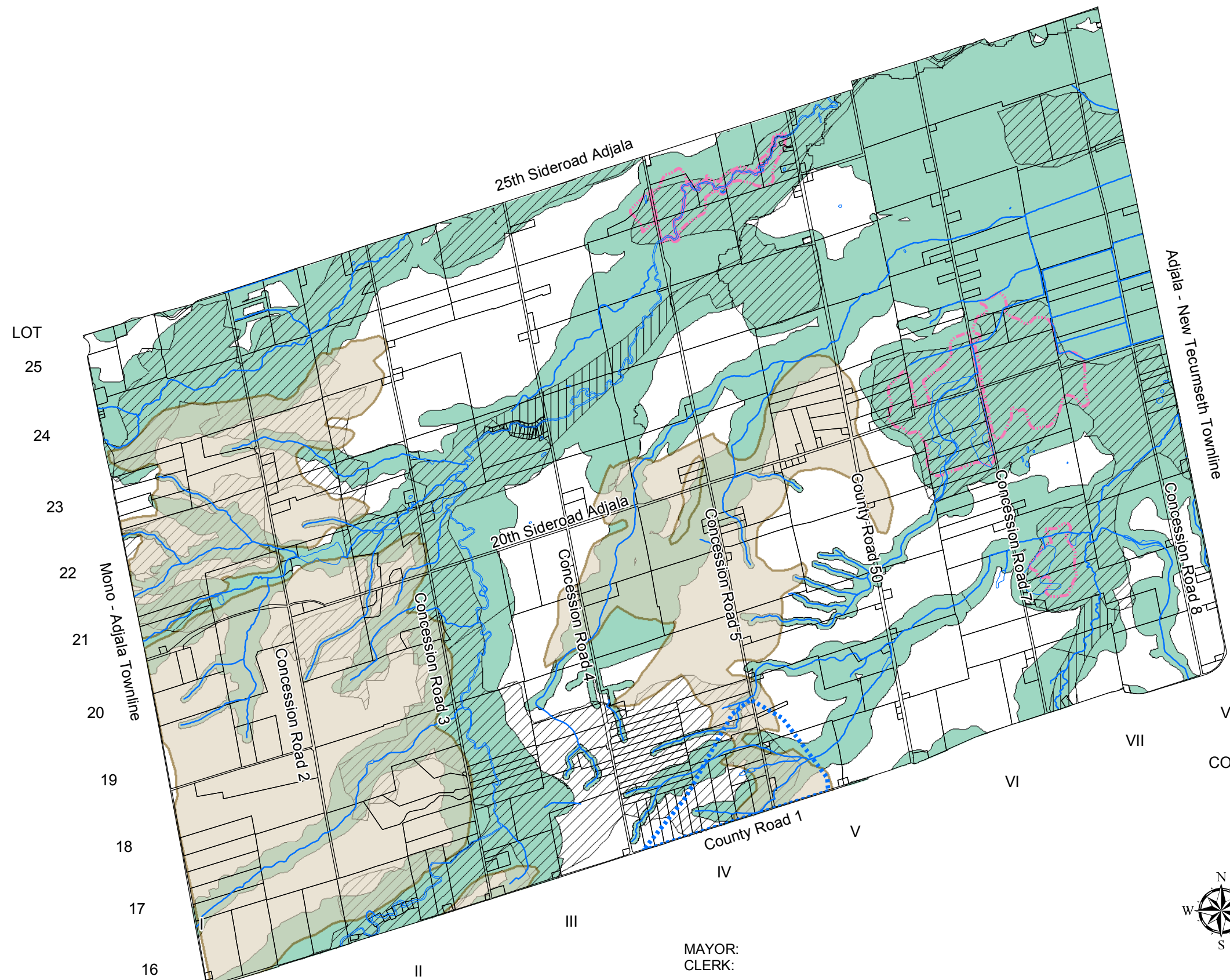


OFFICIAL PLAN
Schedule C-3
NATURAL FEATURES AND
AREAS OF AGGREGATE POTENTIAL



Legend

- STREAMS, RIVERS & LAKES
- OAK RIDGES MORaine BOUNDARY
- SIGNIFICANT WETLANDS CLASS 1-3
- COUNTY OF SIMCOE GREENLANDS
- GREENLAND LINKAGES
- PRIMARY & SECONDARY SAND & GRAVEL
- NVCA OR TRCA FILL AREAS



Scale 1:40,000



Prepared by: R.J. Burnside & Associates Limited
15 Townline, Orangeville, Ontario L9W 3R4
July 11, 2008, with revisions to August 19, 2006.
Consolidated to Aug, 2008.

MAYOR:
CLERK:

PARCEL FABRIC, WATER FEATURES AND OAK RIDGES MORaine BOUNDARY
PROVIDED BY THE COUNTY OF SIMCOE. NVCA AND TRCA FILL AREAS PROVIDED
UNDER LICENCE BY THE NVCA AND TRCA.

THIS IS SCHEDULE A-1 TO THE TOWNSHIP OF ADJALA -TOSORONTIO OFFICIAL PLAN
ADOPTED BY COUNCIL THIS DAY OF ,2008.
APPROVED BY THE COUNTY OF SIMCOE THIS DAY OF ,2008.

This map, either in whole or in part, may not be reproduced without the written authority from the County of Simcoe. Copyright County of Simcoe Land Information Network Cooperative © LINC 2006
Produced (in part) under licence from: the Cities of Barrie & Orillia, the Ontario Ministry of Natural Resources (Copyright © Queens Printer 2006), © Teranet Enterprises Inc. and its suppliers all rights reserved, and Members of the Ontario Geospatial Data Exchange.
THIS IS NOT A PLAN OF SURVEY.
For information call (705) 726-9300 or visit www.county.simcoe.on.ca