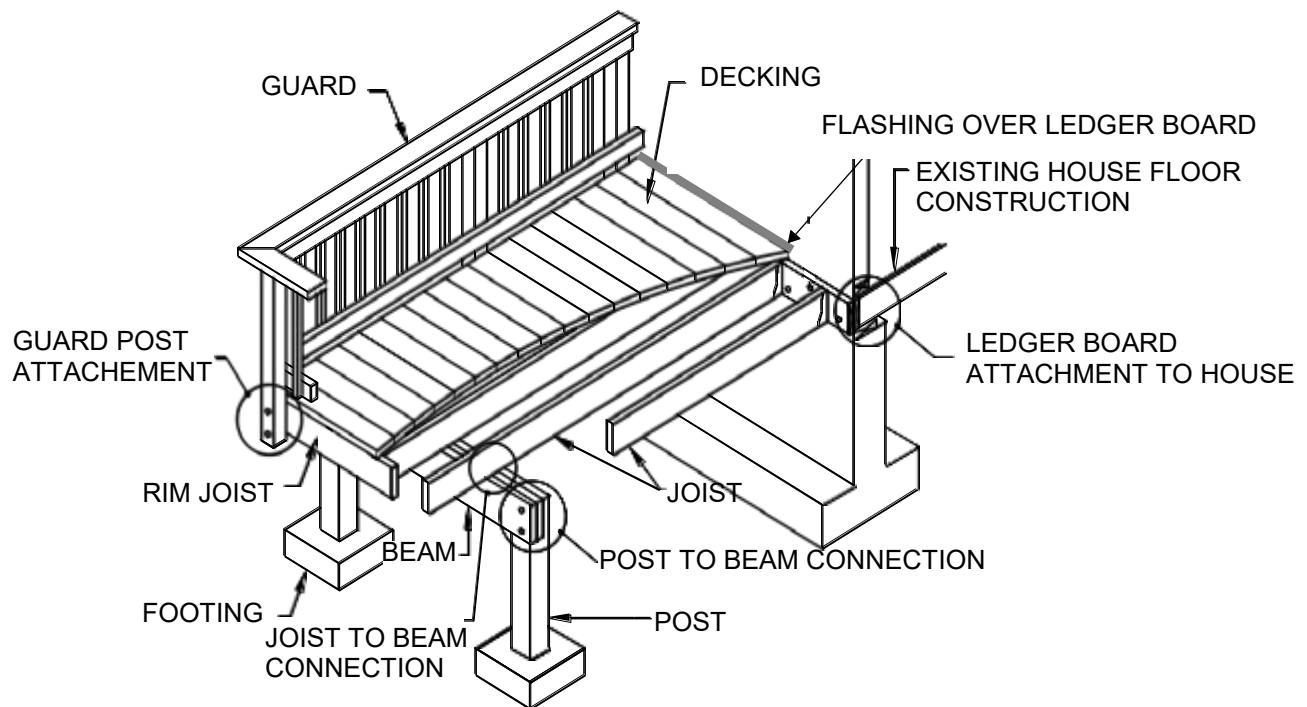


## STANDARD RESIDENTIAL DECK DETAILS



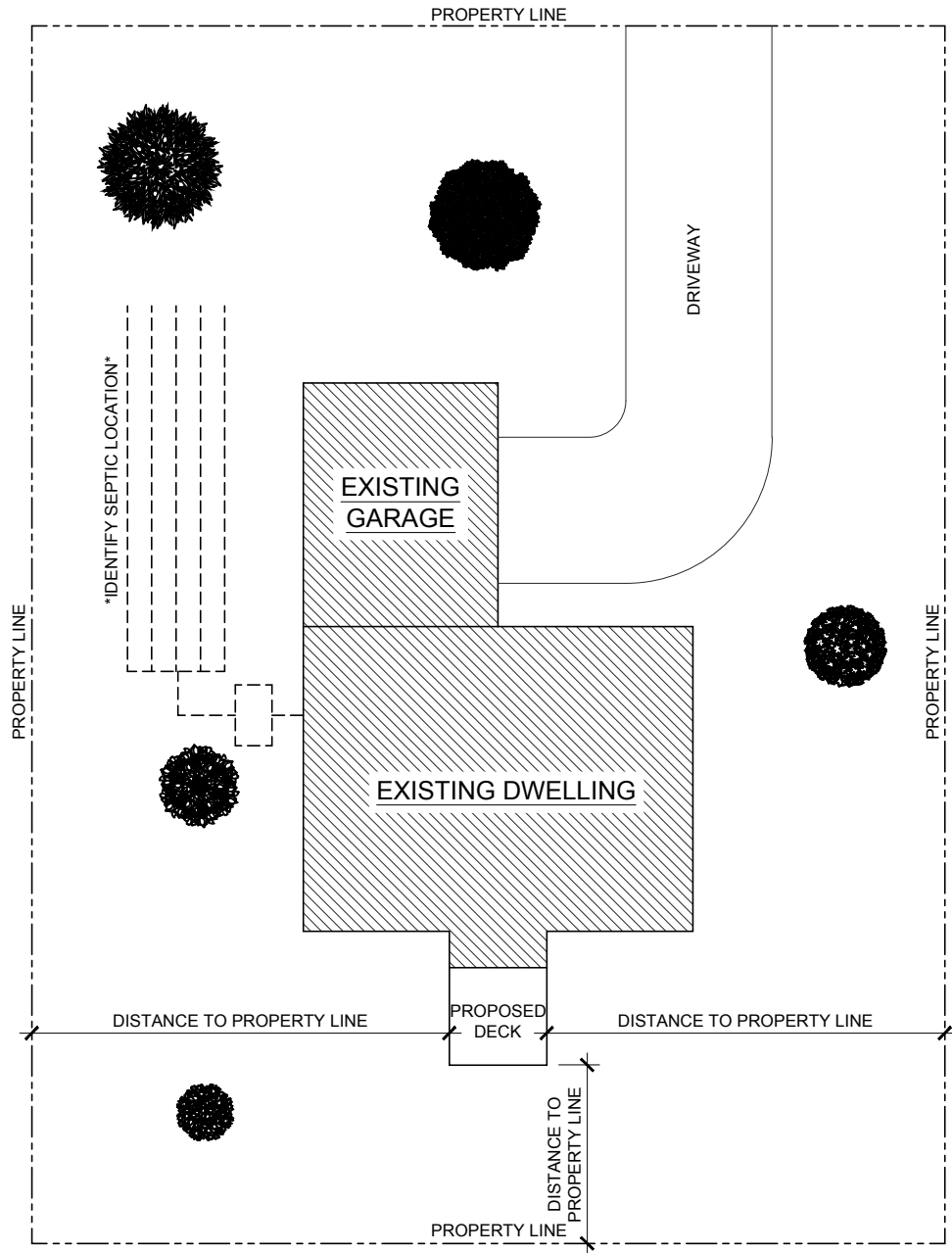
**This document may be used in lieu of submitting construction drawings provided:**

- ✓ **The proposed deck is for residential use only and is UNENCLOSED (No roof);**
- ✓ **No hot tubs, gazebos, or other roof structures are installed; and**
- ✓ **The deck construction conforms to these details.**

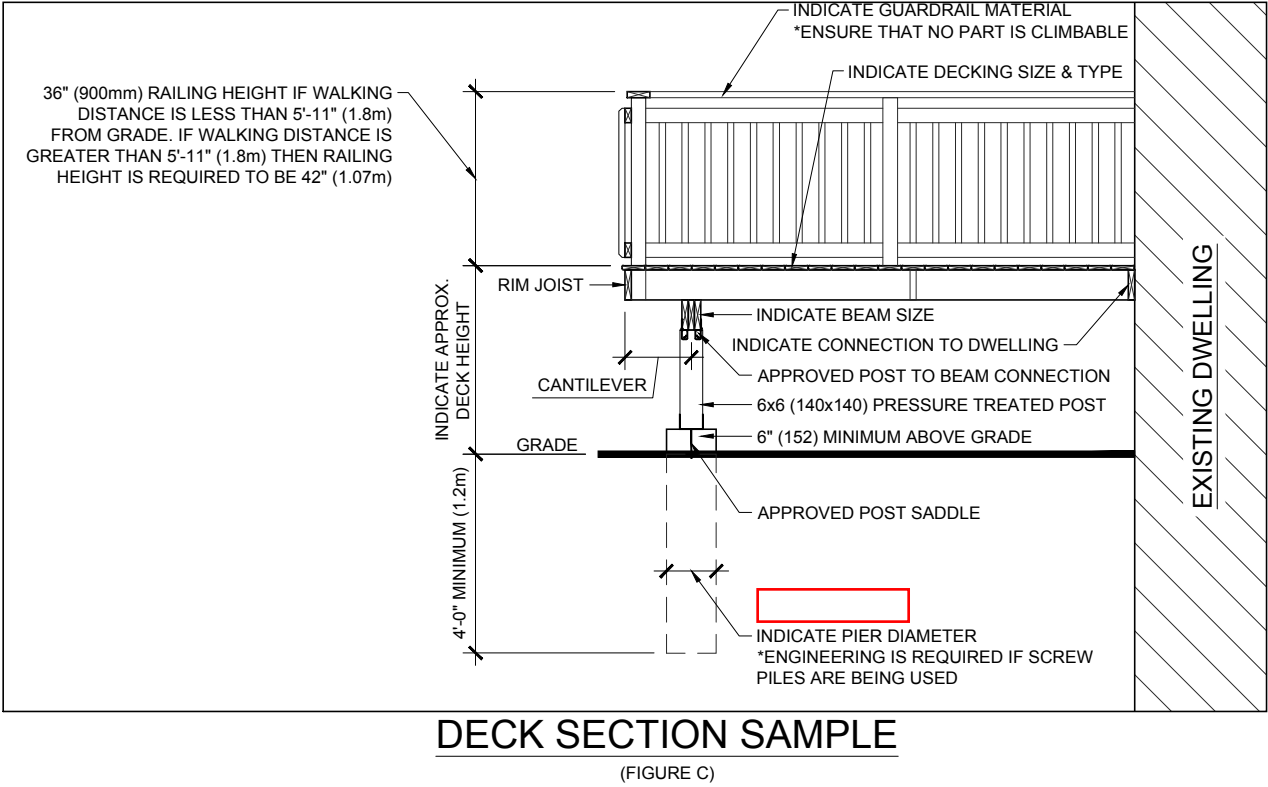
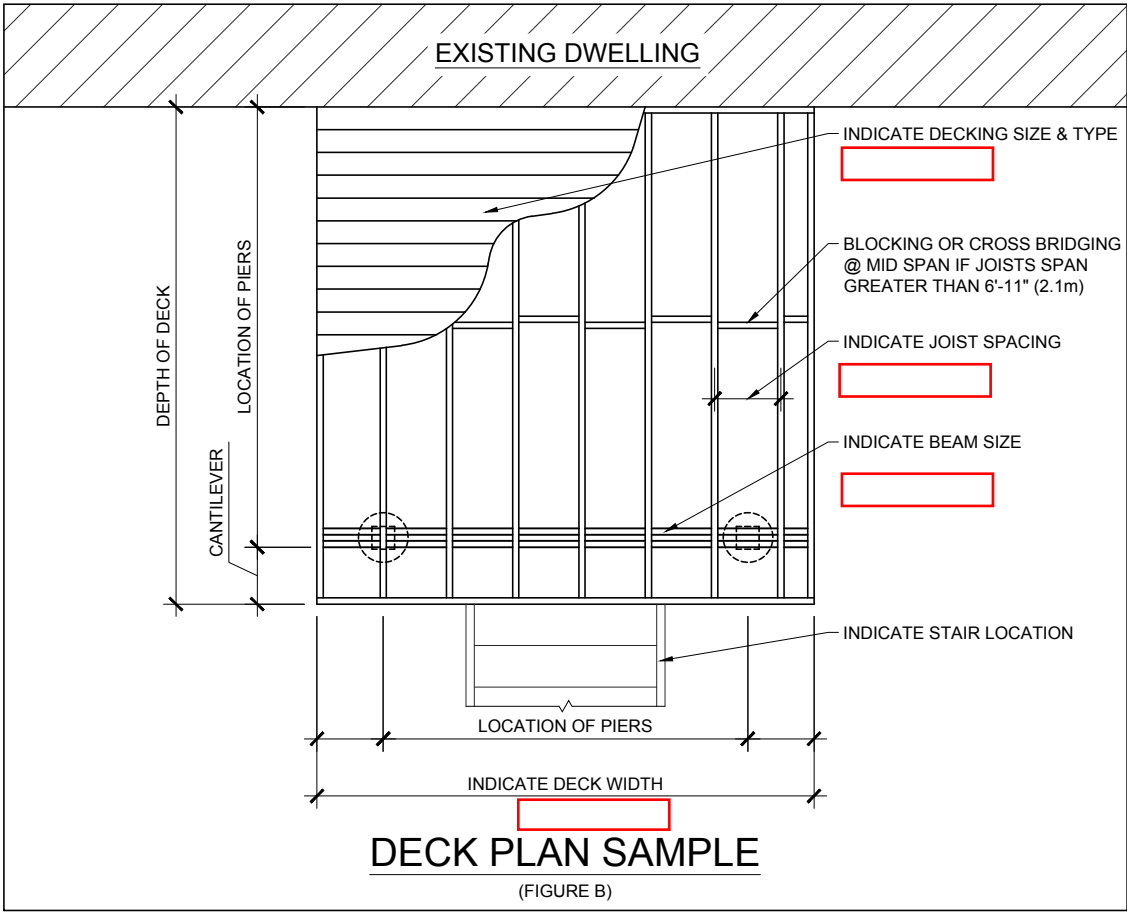
---

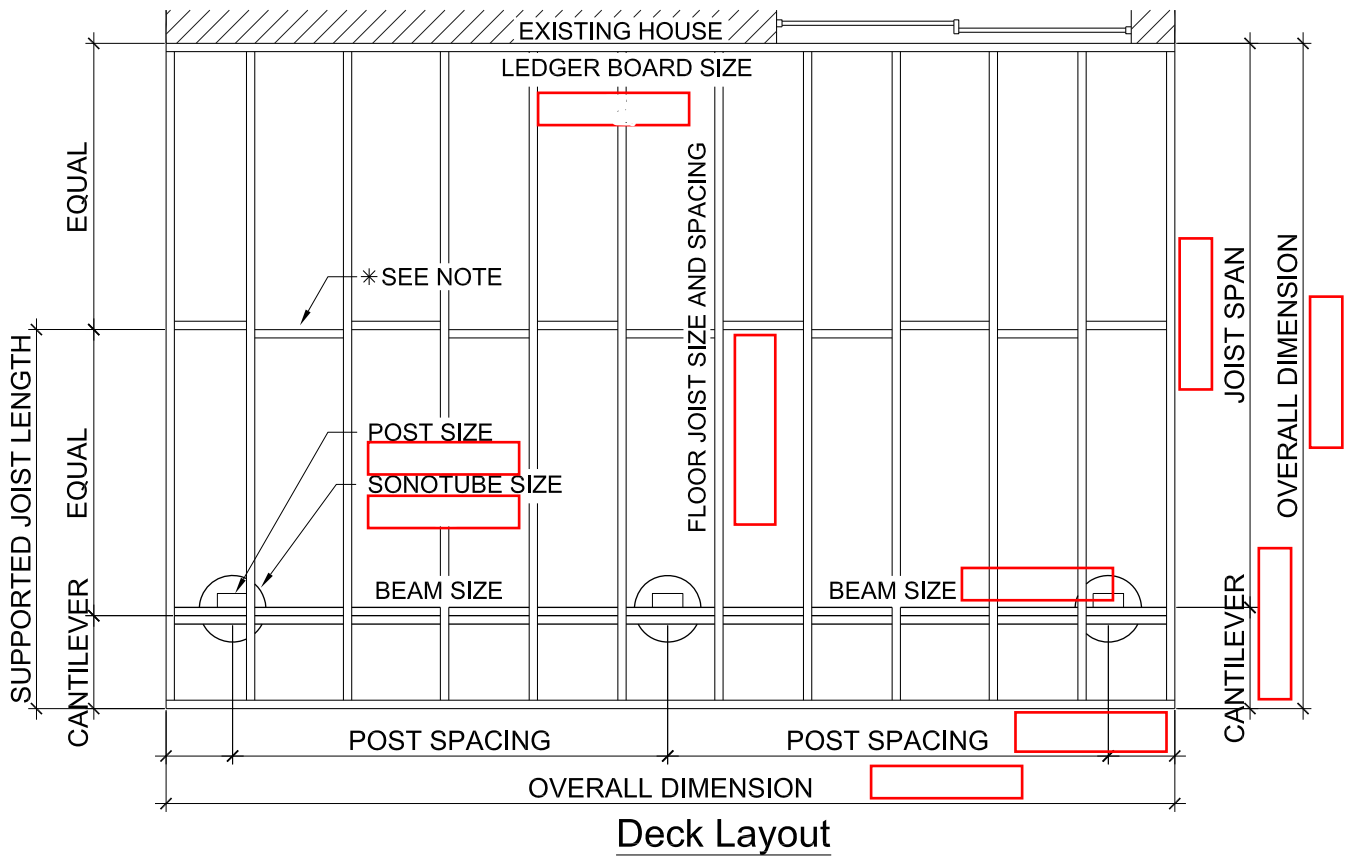
The information contained in this document is for references only. It is intended to assist homeowners with their deck project while ensuring compliance with the requirements of the Ontario Building Code. The drawings and details specified are typical construction details and other methods may be permitted either upon authorization from the Chief Building Official or by having the drawings sealed by a Professional Engineer or accompany a designer sheet signed for the category of Building Structural. All construction shall be inspected including footings (prior to placing concrete), framing and a final inspection prior to use.

**All construction shall conform to the 2012 Ontario Building Code, as amended.**



SAMPLE SITE PLAN  
(FIGURE A)





**Deck Layout**

\*\*All decking is to be 5/4 x 6 wood material or approved equal

**Table 1: Minimum Pier Sizes (Diameter in inches)**

Joist Span	Pier Spacing				
	6'-0"	8'-0"	10'-0"	12'-0"	14'-0"
6'-0"	8"	8"	10"	10"	-
8'-0"	8"	10"	10"	12"	-
10'-0"	10"	10"	12"	12"	-
12'-0"	10"	12"	12"	-	-
14'-0"	12"	12"	-	-	-

Shaded Areas require a Minimum 28" x 28" footing or "Big Foot" Footing System

Maximum 2-Ply Beam Length			
Supported Joist Length	2 x 8	2 x 10	2 x 12
4'-0"	11'-7"	14'-10"	17'-4"
6'-0"	9'-10"	12'-1"	14'-0"
8'-0"	8'-7"	10'-6"	12'-3"
10'-0"	7'-8"	9'-4"	10'-8"
Maximum 3-Ply Beam Length			
8'-0"	10'-8"	13'-0"	15'-1"
10'-0"	9'-6"	11'-8"	13'-6"

Maximum Floor Joist Length		
Joist Size	Max. Span	Max. Cantilever
2x8 @ 12" O.C.	12'-6"	20"
2x8 @ 16" O.C.	11'-9"	16"
2x8 @ 24" O.C.	11'-0"	14"
2x10 @ 12" O.C.	14'-6"	28"
2x10 @ 16" O.C.	13'-8"	24"
2x10 @ 24" O.C.	12'-10"	20"
2x12 @ 12" O.C.	16'-5"	28"
2x12 @ 16" O.C.	15'-6"	24"
2x12 @ 24" O.C.	14'-6"	20"

DECK ELEVATION PLAN AND DECK LATERAL SUPPORT (Where post height exceeds 2'-0")

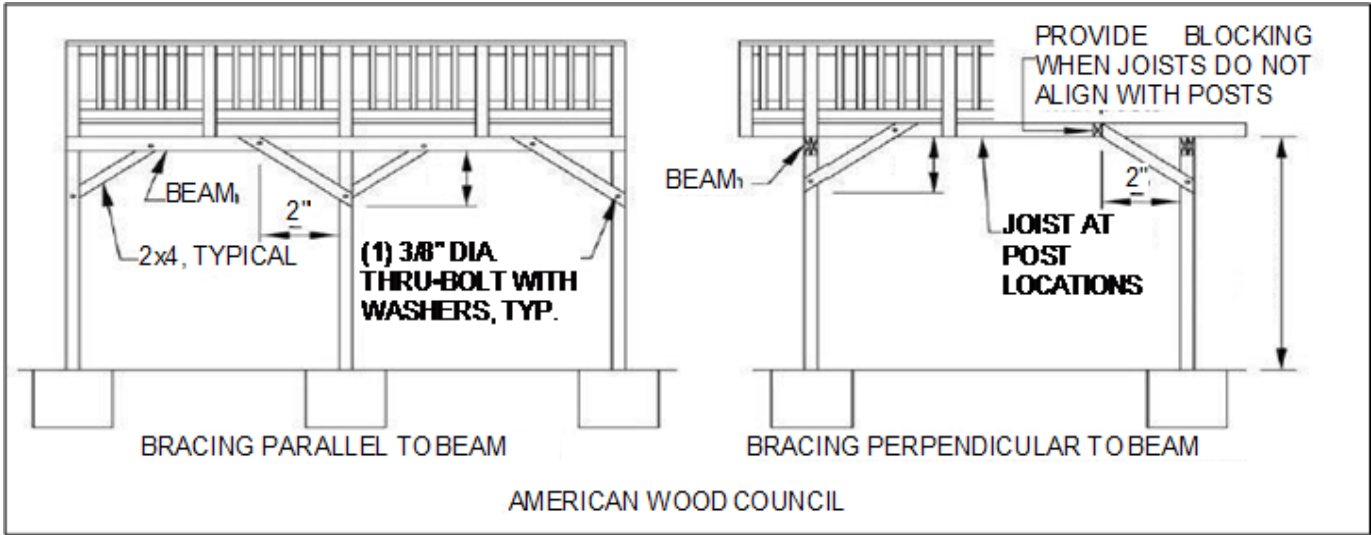
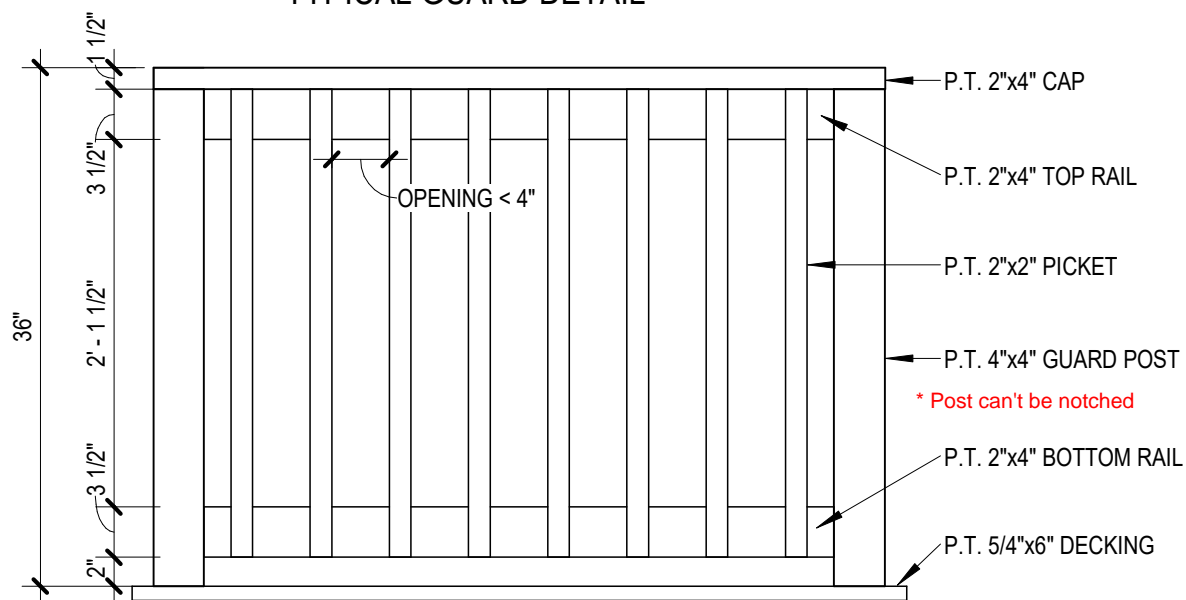


Table 4: Deck Ledger to House Connections: Lag Bolt Spacing (See Diagrams)

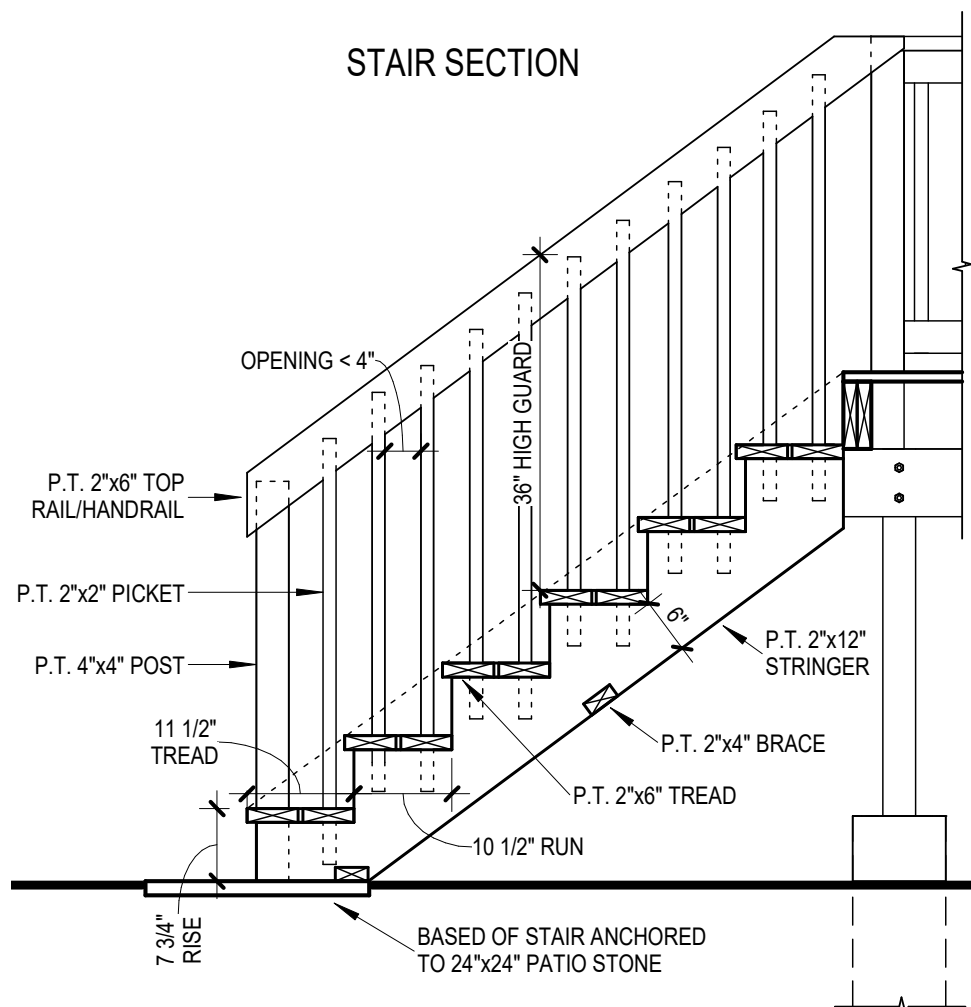
LAG BOLT SIZE	JOIST SPAN			
	Up to 6'-0"	8'-0"	10'-0"	12'-0"
1/2" (12.7mm)	32" o/c	16" o/c	16" o/c	12" o/c
Equivalent 16" o/c Joist Spacing	Every Other Joist Space	Every Joist Space	Every Joist Space	Each Joist Space with Two Every Other Space
3/8" (9.5mm)	24" o/c	12" o/c	12" o/c	8" o/c
Equivalent 16" o./c Joist Spacing	Two Every Third Joist Space	Each Joist Space with Two Every Other Space	Each Joist Space with Two Every Other Space	Two Each Joist Space Three Every Other Space

42" inches required if  
over 5' 11"

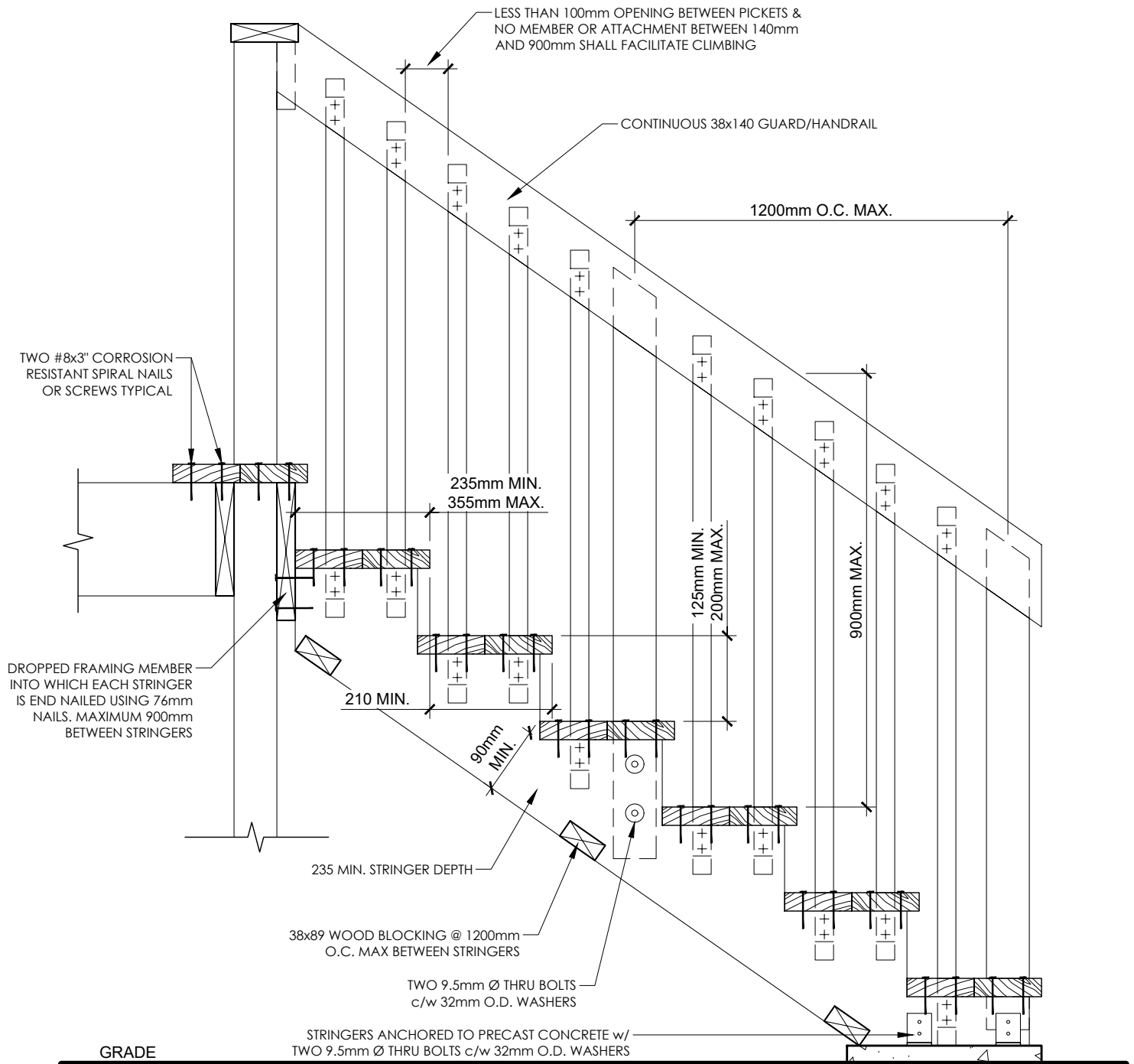
### TYPICAL GUARD DETAIL



### STAIR SECTION



# STAIR AND GUARD CONSTRUCTION DETAIL



TITLE:

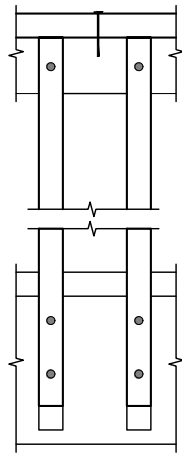
WOOD DECK

D07

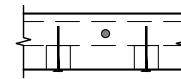
PLANS, CONNECTION DETAILS & SPECIFICATIONS

## DETAIL ED-1 of SB-7 GUIDE

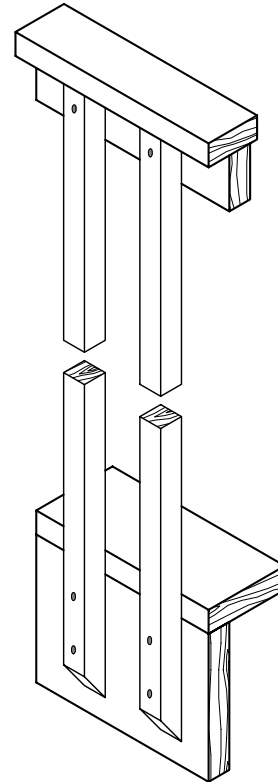
EXTERIOR CONNECTION: CANTILEVERED PICKET SCREWED TO RIM JOIST



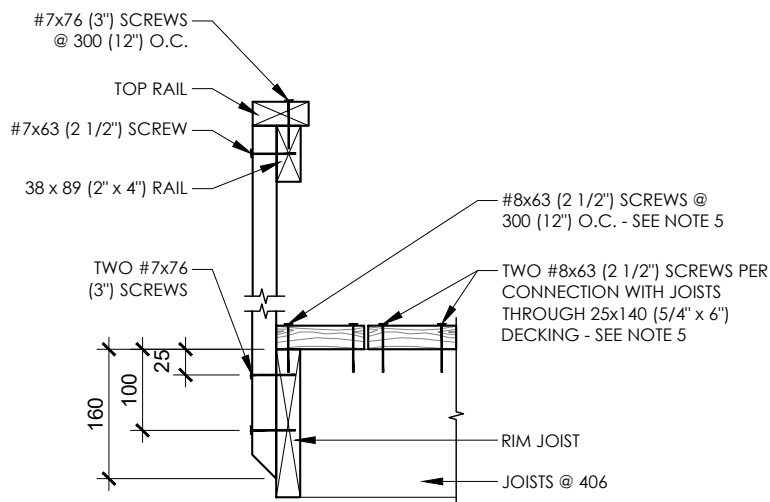
**FRONT ELEVATION**



**PLAN VIEW**



**AXONOMETRIC**



**SECTION**

### NOTES:

1. PROVIDE A SUITABLE POST, RETURN, OR SOLID SUPPORT AT EACH END OF GUARD
2. WOOD FOR CANTILEVERED PICKETS SHALL BE DOUGLAS FIR-LARCH, SPRUCE-PINE-FIR, or HEM-FIR SPECIES
3. FASTEN RIM JOIST TO EACH FLOOR JOIST WITH THREE 82 (3 1/4") NAILS
4. DIMENSIONS SHOWN ARE IN mm UNLESS OTHERWISE NOTED
5. THE OUTER DECK BOARD SHALL BE NOT LESS THAN 140 (6") WIDE. WHERE 38 (2" NOMINAL) THICK BOARDS ARE USED, THE LENGTH OF THE WOOD SCREWS SHALL BE NOT LESS THAN 76 (3")

TITLE:

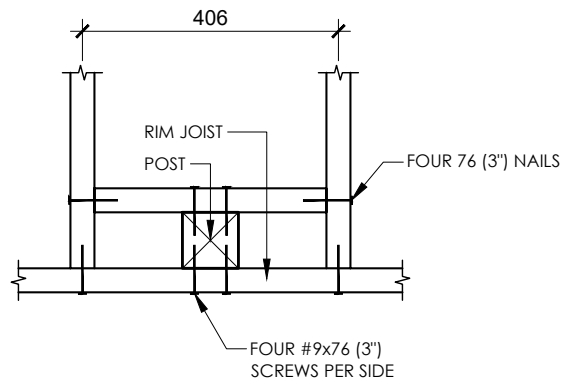
**WOOD DECK**

PLANS, CONNECTION DETAILS & SPECIFICATIONS

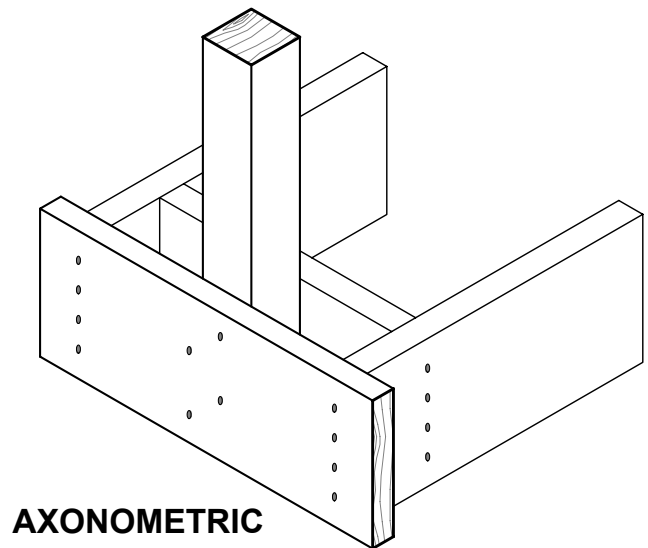
**D08**



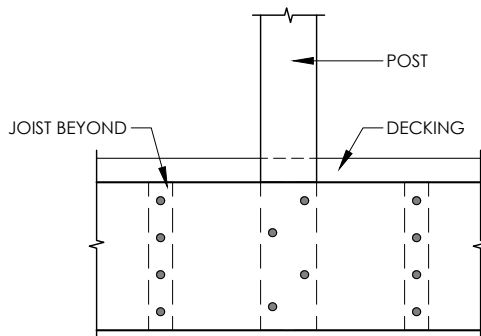
EXTERIOR CONNECTION: POST NAILED TO RIM JOIST



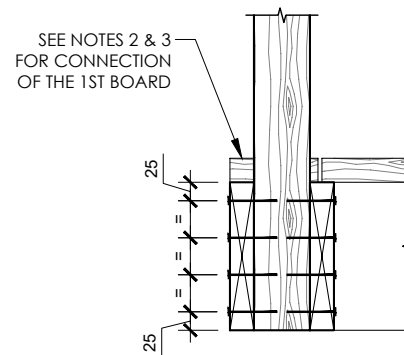
## PLAN VIEW



## AXONOMETRIC



## FRONT ELEVATION



## SECTION

**NOTES:**

1. DECKING IS OMITTED FROM THE PLAN VIEW AND AXONOMETRIC VIEW FOR CLARITY.
2. FASTEN 25x140 (5/4"x6") OUTER DECK BOARD TO RIM JOIST WITH 63 (2 1/2") NAILS @ 300 (12").
3. FASTEN 25x140 (5/4"x6") OUTER DECK BOARD TO FLOOR JOIST WITH ONE 63 (2 1/2") NAIL AT EACH JOIST.
4. THE POST MAY BE POSITIONED ANYWHERE BETWEEN JOISTS.
5. DIMENSIONS ARE IN mm UNLESS OTHERWISE SPECIFIED.

MAXIMUM SPAN OF RAIL BETWEEN POSTS	
SPECIES	MAXIMUM SPAN, m (ft - in)
DOUGLAS FIR-LARCH, HEM-FIR, SPRUCE PINE FIR	1.22 (4'-0")
NORTHERN SPECIES	1.20 (3'-11")

TITLE:
--------

## WOOD DECK

## PLANS, CONNECTION DETAILS & SPECIFICATIONS

D09